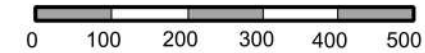


"nikkin-ba" is Awabakal for "place of coal".

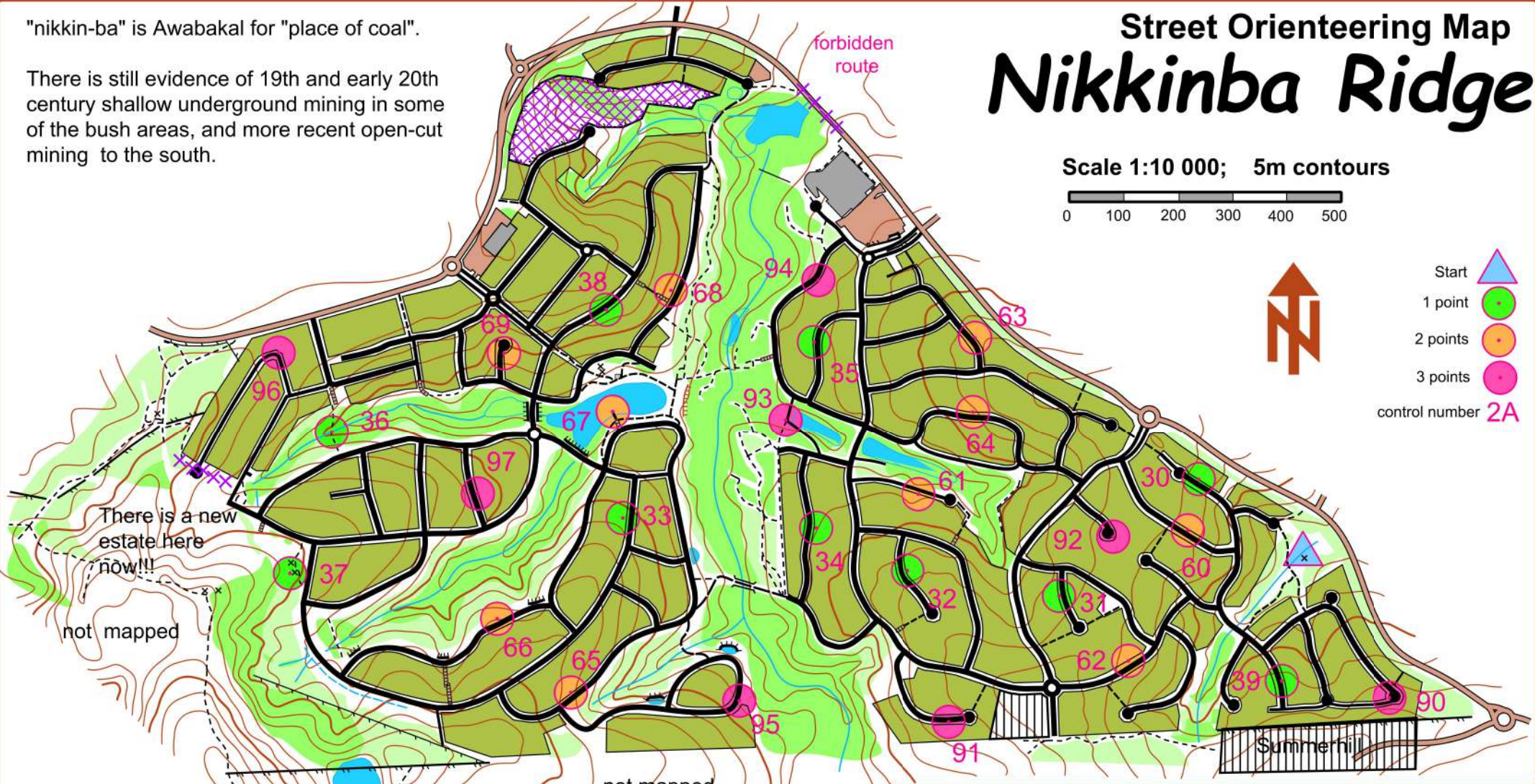
There is still evidence of 19th and early 20th century shallow underground mining in some of the bush areas, and more recent open-cut mining to the south.

# Street Orienteering Map Nikkinba Ridge

Scale 1:10 000; 5m contours



- Start
- 1 point
- 2 points
- 3 points
- control number **2A**



There is a new estate here now!!!

not mapped

not mapped

Event Emergency  
Contact: Ph 0490 686207  
Course Closure 7.25 pm



**All Obvious Private Property  
is OUT OF BOUNDS**

First Drawn by Russell Rigby  
for Newcastle Orienteering Club - January 2014  
Updated; Geoff Todkill from LIDAR data. 2019  
Basemap: Russell Rigby



Map version: Oct 2019  
Copyright: Newcastle Orienteering Club  
website: [newcastleorienteering.asn.au](http://newcastleorienteering.asn.au)  
(02) 49653243

### Legend

	Road, Bridge, Forbidden route		Building
	Street, Roundabout, Place, Lane		Pole, Picnic shelter
	Cycleway, Path, Minor track		Contours, Embankment
	Stairs (or steep - no prams)		Impassable cliff
	Car Park		Watercourse, Pond, Drain
	Residential, out of bounds		Runnable forest
	Open area, out of bounds eg. School, farm		Thick vegetation
	Open area, eg Oval, park		Construction area
	Low fence, High fence		

TSS-2020 Event 2	
------------------	--

Fletcher South

<b>30</b>	#11 Lb
<b>31</b>	#6 Lb
<b>32</b>	#3 Lb
<b>33</b>	#6 Lb
<b>34</b>	#21 Lb
<b>35</b>	#13 Lb
<b>36</b>	Track/Creek X
<b>37</b>	Slippery dip
<b>38</b>	#24 Lb
<b>39</b>	SI 9-7193

<b>60</b>	SI 7315IT6
<b>61</b>	SI IT60878
<b>62</b>	#86 Lb
<b>63</b>	sceb IT98096
<b>64</b>	#19 Lb
<b>65</b>	sceb IT50341
<b>66</b>	BGEB 66277
<b>67</b>	End of jetty
<b>68</b>	SI IT63116
<b>69</b>	#6 Lb

<b>90</b>	SP Walnut Way
<b>91</b>	#18 Lb
<b>92</b>	#11 Lb
<b>93</b>	Track Bend
<b>94</b>	#69 Lb
<b>95</b>	SP No Entry
<b>96</b>	SI IT98258
<b>97</b>	lgeb IT50106

Legend	
<b>BS</b>	Bus stop
<b>BGEB</b>	Big green electricity box
<b>Lb</b>	Letterbox
<b>lgeb</b>	Little green electricity box
<b>sceb</b>	Small cream electricity box
<b>SI</b>	Street light
<b>SP</b>	Sign post
<b>TP</b>	Telegraph Pole
↑	North side
↖	North west side
←	West side
↙	South west side
↓	South side
↘	South east side
→	East side
↗	North east side
>	Corner
<b>X</b>	Crossing
<b>Y</b>	Junction