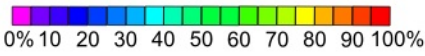


O'Donnelltown

MTB Orienteering map

Scale 1:10 000, Contours 5m



BOSS4, 26/1/2025

All Score

PIN: ????

Event Contact:

Ph 0490 686207

Course Closure 10:30 am

**Riding permitted only
on mapped tracks,
and open land.**

This area is private property.
Permission for orienteering
must be obtained from the owners.

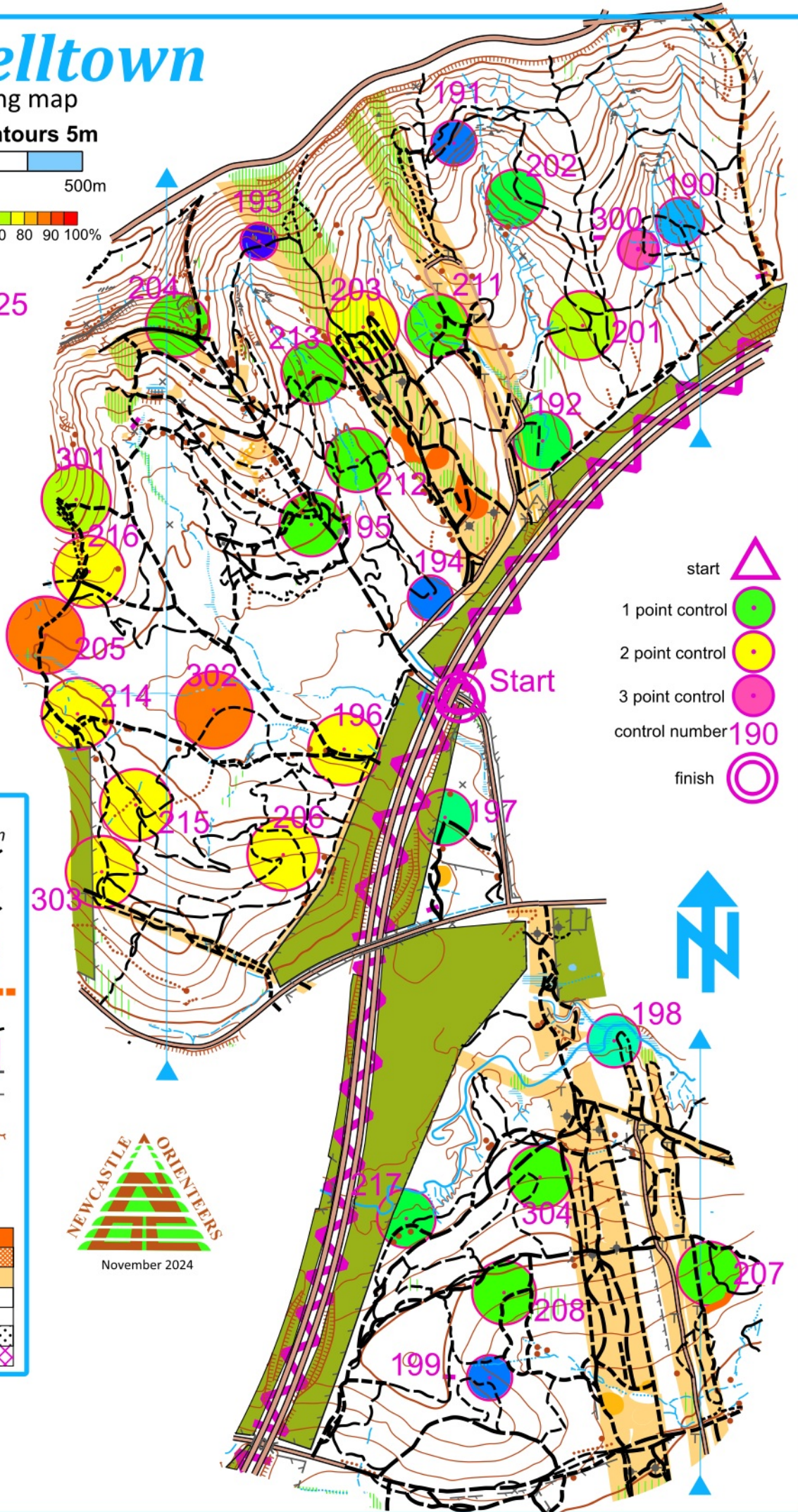
Legend

	Track	Path
	> 1.8 m	< 1.8 m
Fast Riding		
Medium Riding		
Slow Riding		
Very slow Riding		
Overgrown path		
Roads, paved		
unpaved		
Rideable links		
Marked Route		
Forbidden Route		
Obstacle/Danger		
Impassable fence		
Crossing point		
Contours		
Cliffs/Earth Bank		
Watercourses		
Dam/Earth wall/Marsh		
Building/Ruin/Wreck		
Tower/Power pole		
Open land (Rideable)		
Open land/trees (Rideable)		
Rough Open		
Forest open		
Forest slow		
Forest open (Rideable)		
Out of Bounds		



November 2024

- start
- 1 point control
- 2 point control
- 3 point control
- control number 190
- finish



Copyright: Newcastle Orienteering Club
website: newcastleorienteering.asn.au
enquiry: newcastleorienteering.asn.au

Orienteering Association of NSW.
www.onsw.asn.au
contact: admin@onsw.asn.au